



INSPIRE! APPEAL

***Saving St Bride's,
Fleet Street***

Why an Appeal for Christopher Wren's masterpiece?

In simple terms the spire is falling down!

- St Bride's is one of the finest examples of Christopher Wren's work which has stood for more than 300 years.
- Wren's tallest City church has survived world wars, decades of smoky chimneys, storms, gales and lightning, defiling by birds and post-war pile driving: no surprise then that its walls and tower have needed periodic strengthening.
- Rusting of Wren's original iron cramps, which hold the stones together, is breaking stone faces apart.
- Damage to stonework causing falls of stone from the tower has now become of serious concern.
- Grime has built up since the last cleaning 40 years ago and carbon more than an inch deep in places has accumulated in the iconic spire.
- The interior of the church, untouched for more than 30 years, sorely needs attention.
- The parish has to start fundraising now to carry out the vital conservation work during 2013 so essential to ensuring the future of St. Bride's through the 21st Century.



Rusting cramps damaging ashlar face



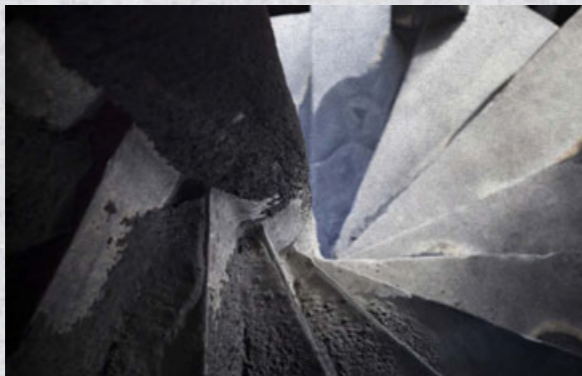
Rusting cramps damaging ashlar face



Heavy staining and bird pollution



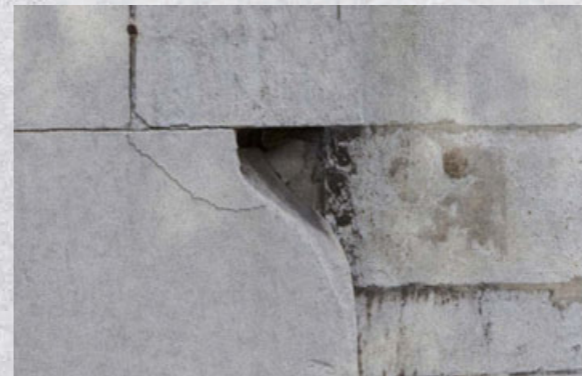
Staining and parapet cracks



Pollution deposit on spire steps



Parapet cracks; sculpture erosion; inappropriate pointing



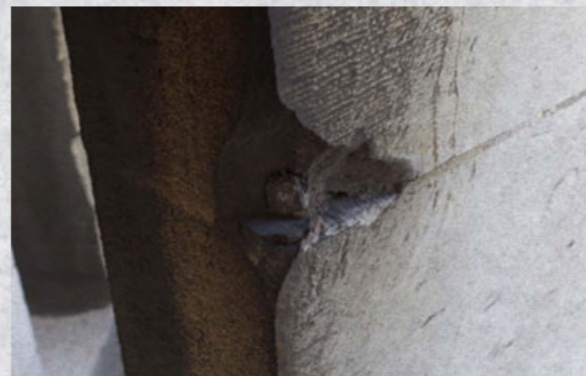
Ferrous cramp damage



Cement mortar fillet; ferrous cramp damage



Fallen stone



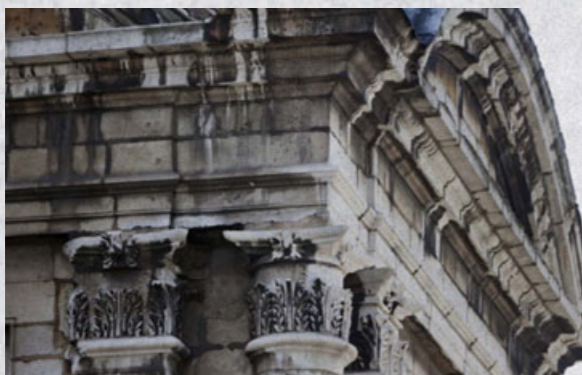
Damage by rusting cramp



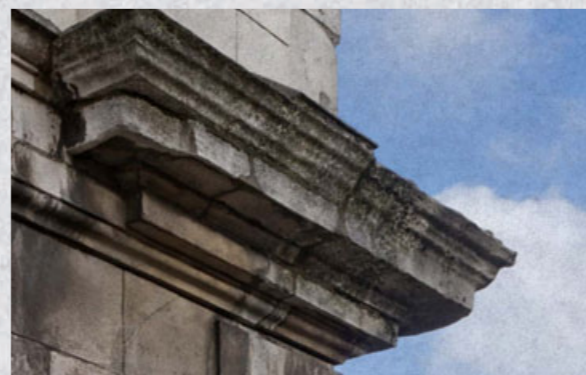
Heavy erosion forming hole in cornice



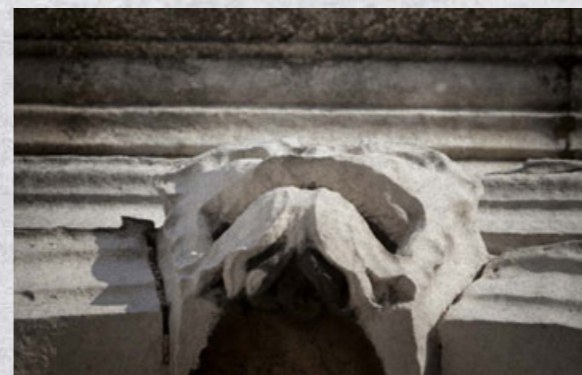
Loss of sculptural detail



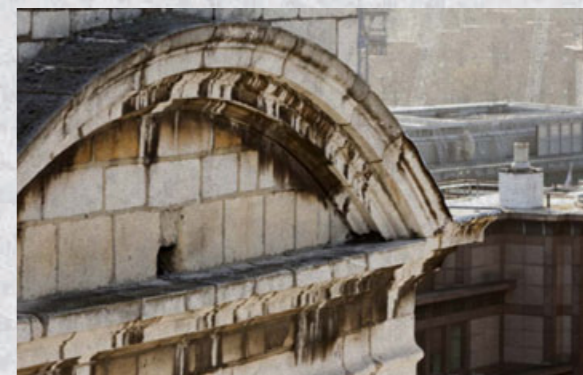
Inappropriate sculpture repair; eroded drip detail & heavy staining



Heavy erosion; eroded drip detail & heavy staining



Loss of sculptural detail



Partial lead dressing on segmental pediment; staining and erosion

St Bride's Fleet Street has a special significance for many people, located as it is in the heart of the City of London:

"The City landscape is punctuated with historic buildings, many of them churches, a few are fine examples of Wren's best work. They are the glue that holds the Cityscape together and makes the varied property skyline what it is today."



Sir Michael Bear,
Master of the Worshipful
Company of Paviers,
Late Lord Mayor
of London

"Architecture can be symbolic as well as functional, a reminder of the past as well as an amenity for the present, and aesthetic as well as technical. Wren's St Bride's Church, with its distinctive spire, is a timeless example."



Paul Finch OBE,
Chairman,
Design Council Caba



Adrian Tinniswood,
Writer and Historian

"Sir Christopher Wren was quite simply the greatest architect that England has ever known. In the years after the Great Fire his buildings defined London. And it is a measure of his genius that nearly 350 years later they still do. St Paul's dominates the skyline. The churches are fixed points in the ever changing City scape, precious jewels which still shine brighter than so much of what came after. And St Bride's is one of Wren's best. There is no greater accolade than that."

"St Bride's, the tallest City church that Wren built, has stood firm for centuries. This 'madrigal of stone' which has inspired designers, authors, conservationists and cake-makers for centuries urgently needs to be repaired, protected and made safe for the use and delight of future generations.



John Smith,
Architect in Residence

In 2013 the parish will embark on the important conservation work necessary in order to increase the fabric's life and secure the future of St Bride's into the heart of the 21st century."



Nick Ferrari,
Journalist and
Broadcaster

"St Bride's is not only a church but a focal point, a rallying point for the UK's fourth estate, Fleet Street, the newspaper industry and the broader broadcast and on line media business. It is 500 years since Wynkyn de Worde first set up his press in the churchyard of St Bride's and it is nearly 25 years since the newspapers moved out of Fleet Street; nevertheless it is to St Bride's that we journalists return for the celebration of the industry and individual people's contribution to a free press."

“ Wren’s Spire has inspired for over 300 years and continues to **INSPIRE!** today.

We need to raise **£2.5 million** – for this vital programme of restoration. We have committed £300,000 from our current reserves to this task. ”


“St Bride’s is a working church; a building that is constantly in use seven days a week, with an active congregation of residents and local business people. As well as the daily life of St Bride’s there are regular weddings, christenings, memorials, and concerts. The association with Wren ensures that there is also a regular overseas visitor profile too. All this is serviced by a small staff and with the help of a team of volunteers.

St Bride’s walls and tower needed to be strengthened earlier in the last century as well as during the 1950’s programme of restoration. Since then they have survived smoky chimneys, lightning, stormy gales, acid rain, extensive pile-driving and defiling by birds. This damage to the stonework has now become a serious concern as pieces of stone are falling from the tower and are a danger to the public.

It is also forty years since the tower’s last cleaning, and the grime of London life has again built-up and is obscuring much of the beauty of Wren’s masterpiece.

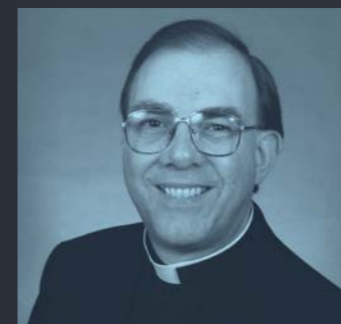
St Bride’s is one of London’s most beautiful and inspiring structures. It has been at the heart of printing and the media for over 500 years and buildings on this site have been in use for nearly 2000 years. It now sits amongst one of the great centres of London commerce and finance.

We need your help to ensure that St Bride’s continues to play an active part in the life of the City of London and remains a fully working building in Fleet Street, with a clear focus that stimulates, interacts and contributes to the congregation that includes the media, the financial sector, large and small local businesses, the passing tourist and you and me.”



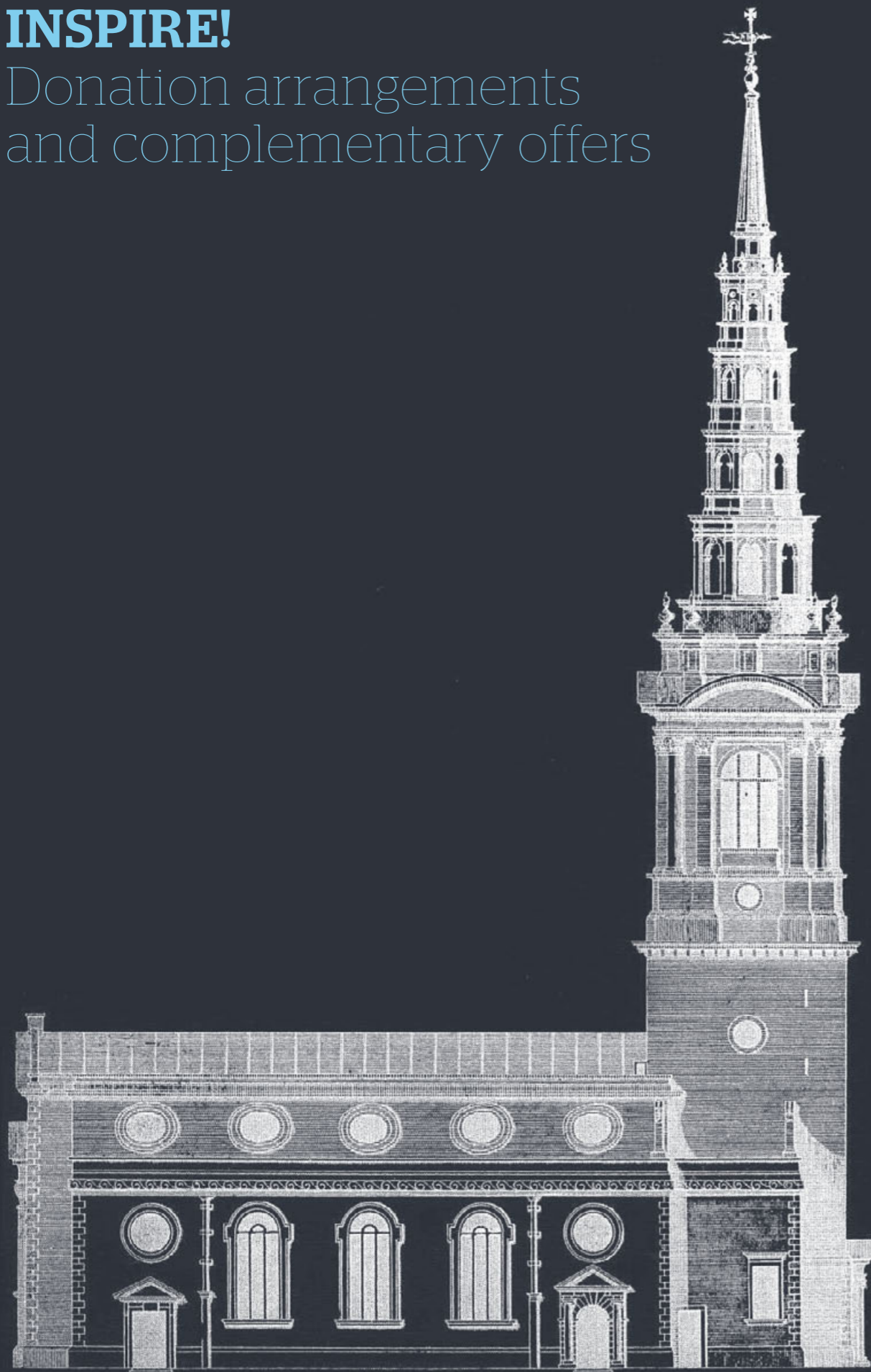
The Venerable David Meara

Archdeacon of London
Rector of St Bride’s



INSPIRE!

Donation arrangements
and complementary offers



Introduction

- Any donation can be payable (contracted) over three years rather than all at once, if that is what a donor wishes.
- Donations are intended to help the primary purpose of the appeal, but will attract complementary benefits.
- All donors will be invited to a service of thanksgiving specifically related to this appeal.
- All donors will have their names recorded in the church in some form.

Individual donations (Bronze)

- Floor of £1,000
- Name on bronze plaque
- Print of St Bride's

Family and corporate donation (Bronze)

- Floor of £12,750
- Payable over three years
- Family or Company name on bronze plaque
- Print of St Bride's
- Certificate of thanks

Donation can be contracted over three years

Individual, family and corporate donations (Silver)

- Floor of £25,000
- Name on silver plaque
- Print of St Bride's
- Certificate of thanks

Donation can be contracted over three years

Individual, family and corporate donations (Gold)

- Floor of £100,000
- Name on gold plaque
- Limited edition print of Wren St Bride's drawing
- Certificate of thanks
- Sponsorship of chorister
- Time capsule donation
- Named church event sponsor

Donation can be contracted over three years

Individual, family and corporate donations (Platinum)

- Floor of £500,000
- Name on standalone platinum plaque
- Early numbered limited edition Wren print, i.e. start with 1/50
- Individualised model of the church or spire
- Certificate of thanks (hand lettered)
- Sponsorship of chorister
- Time capsule donation
- Named church event sponsor

Donation can be contracted over three years

**SHOULD YOU WISH TO DISCUSS ANY OF THESE DONATION OPTIONS
PLEASE CONTACT A MEMBER OF THE WORKING GROUP**

HOW YOU CAN HELP

By individuals

Gift Aid donations increase the value of a cash gift by 25%, and higher rate taxpayers receive a personal allowance reducing the net 'cost' of their gift.

Gifts of assets including shares and securities, units in unit trusts, shares in open-ended investment companies, interest on offshore funds, and property.
- Donations from Trust Funds

By companies

Gift Aid for cash donations, but different rules apply on tax refunds. The value of donated shares and securities are treated as a deduction from company income. There can be tax exemption and relief from Corporation Tax on a gain, or relief against future Capital Gains Tax from a loss.

**To register your interest in making a donation
or for more information, please contact:**

James Irving

Director of Finance
St Bride's INSPIRE! Appeal
Fleet Street
London
EC4Y 8AU

T 020 7427 0133

E j.irving@stbrides.com

INSPIRE! Appeal *Working Group*

Sir Michael Bear - Patron

Master of The Worshipful Company of Paviers

Paul Finch OBE - Chairman

Chairman, Design Council Cabi

Gerald Bowey - Deputy Chairman

CEO, International Building Press

James Irving - Hon Secretary

Director of Finance, St Bride's

Vanessa Brady

President, Society of British, Interior Design

Nick Ferrari

Journalist and broadcaster

Jonathan Lewis

Executive Chairman, LiveGroup

Ian Locks

Church Warden, St Bride's

Michael Rose CBE, Hon FRIBA

Chairman, The Building Centre Group Ltd

Sarah Rutt

Associate Director, ING MEDIA

John Smith

Architect in Residence, St Bride's

Alistair P Subba Row

Senior Partner, Farebrother

Adrian Tinniswood

Writer and Historian

